



INDONESIA CLIMATE CHANGE TRUST FUND (ICCTF)



Indonesia Climate Change Trust Fund

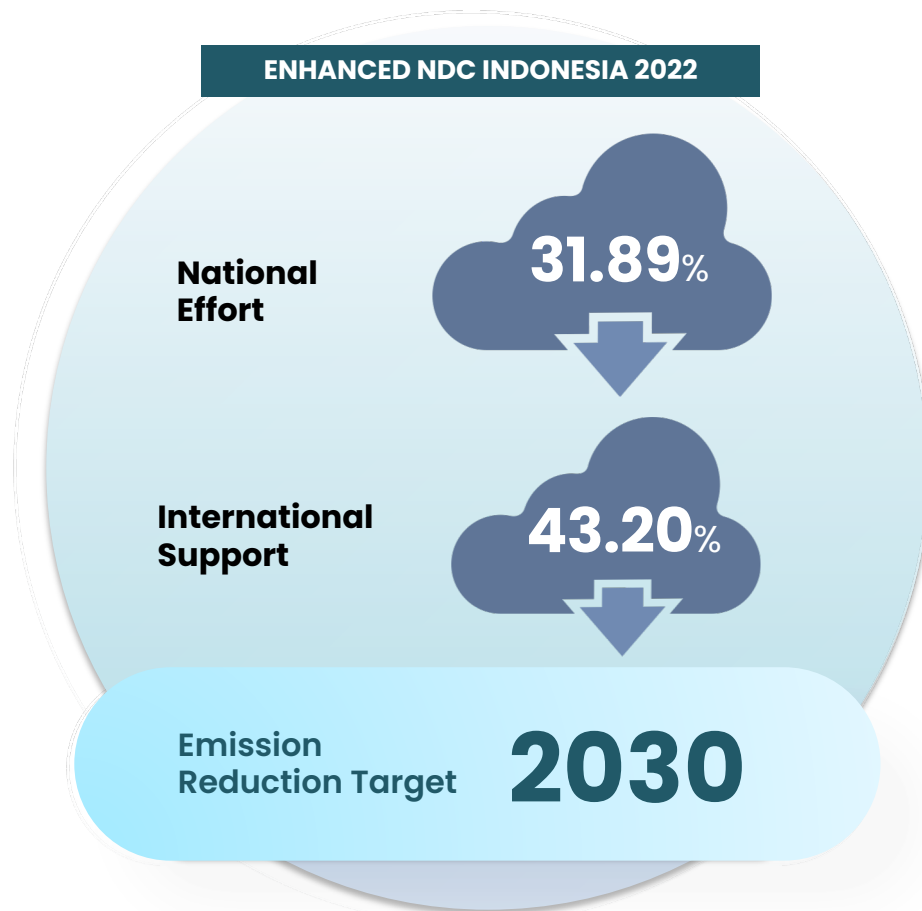
Indonesia Climate Change Trust Fund (ICCTF) is a **National Trust Fund** served as funding instrument for the Government of Indonesia to support **31,89%** emission reduction target by national effort and up to **43,20%** with international support in **2030**.



To support the Indonesian Government in reducing GHG emission through moves towards a low carbon economy and adaptation to climate change impacts.



1. Integrating climate change issues into national, provincial and district development plans;
2. Implementing mitigation and adaptation initiatives in the context of GHG emission reduction.





Land-based Mitigation

Aim to reduce GHG emissions through financial support on **reforestation/rehabilitation** and **restoration** of degraded lands into community forest, agroforestry, including productive management of degraded peat land, and sustainable area conservation management.



Energy

Aim to reduce GHG emissions in relation to **supply** and **demand of renewable energy**, including the financing of energy biomass and the implementation of conservation and energy efficiency.

Focus areas



Adaptation & Resilience

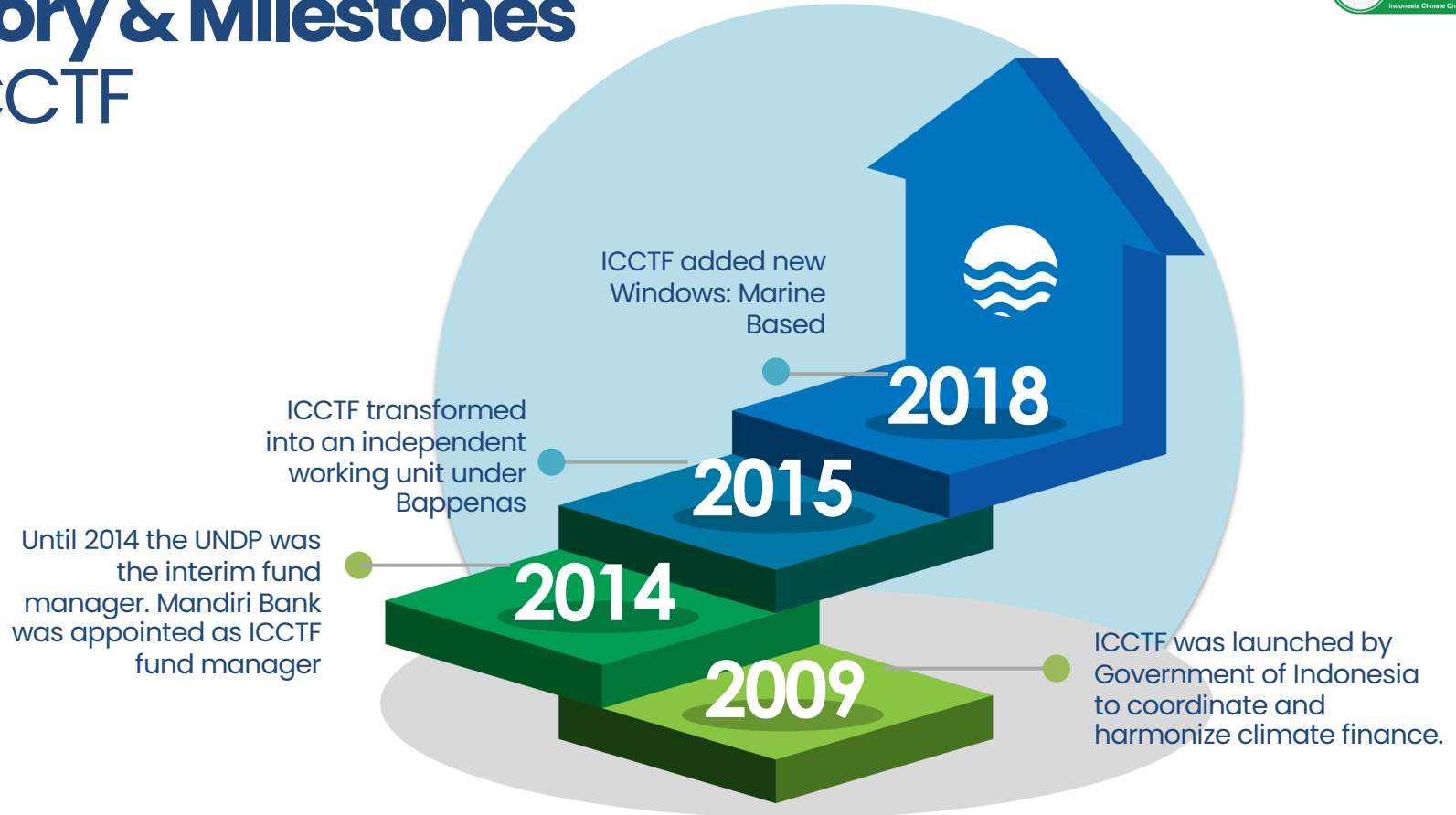
Aim to repair national and local institutions targeting communities **vulnerable to the impacts of climate change** through the dissemination of climate information, development and innovation of adaptation strategies, use of technology and knowledge, and promote the establishment of policies for adaptation.



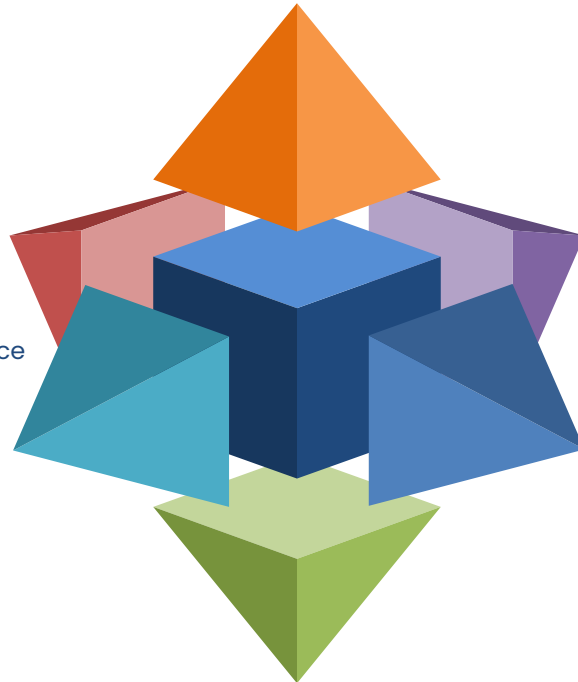
Marine based

Aim to promote **sustainable use of marine resources** and to conserve biodiversity in coastal and marine areas including coral reef and blue carbon ecosystems by improving coastal community's livelihood and sustainable financing mechanism

History & Milestones of ICCTF



Transformation from PREP-ICCTF into Indonesia Climate Change Trust Fund – 2015



Institutional Form

ICCTF is equated as a Working Unit (presidential regulation No. 80, 2011)



Trust Fund period

Trustee Agency has no time limit since its establishment (Bappenas Ministerial Regulation No.12/2018)



Decision Making Structure

Board of Trustees (Ministerial Decree No. 111/2018)



Governing Documents

- ICCTF Bylaws
- ICCTF Guidelines (SOP)
- Business Plan



Donors

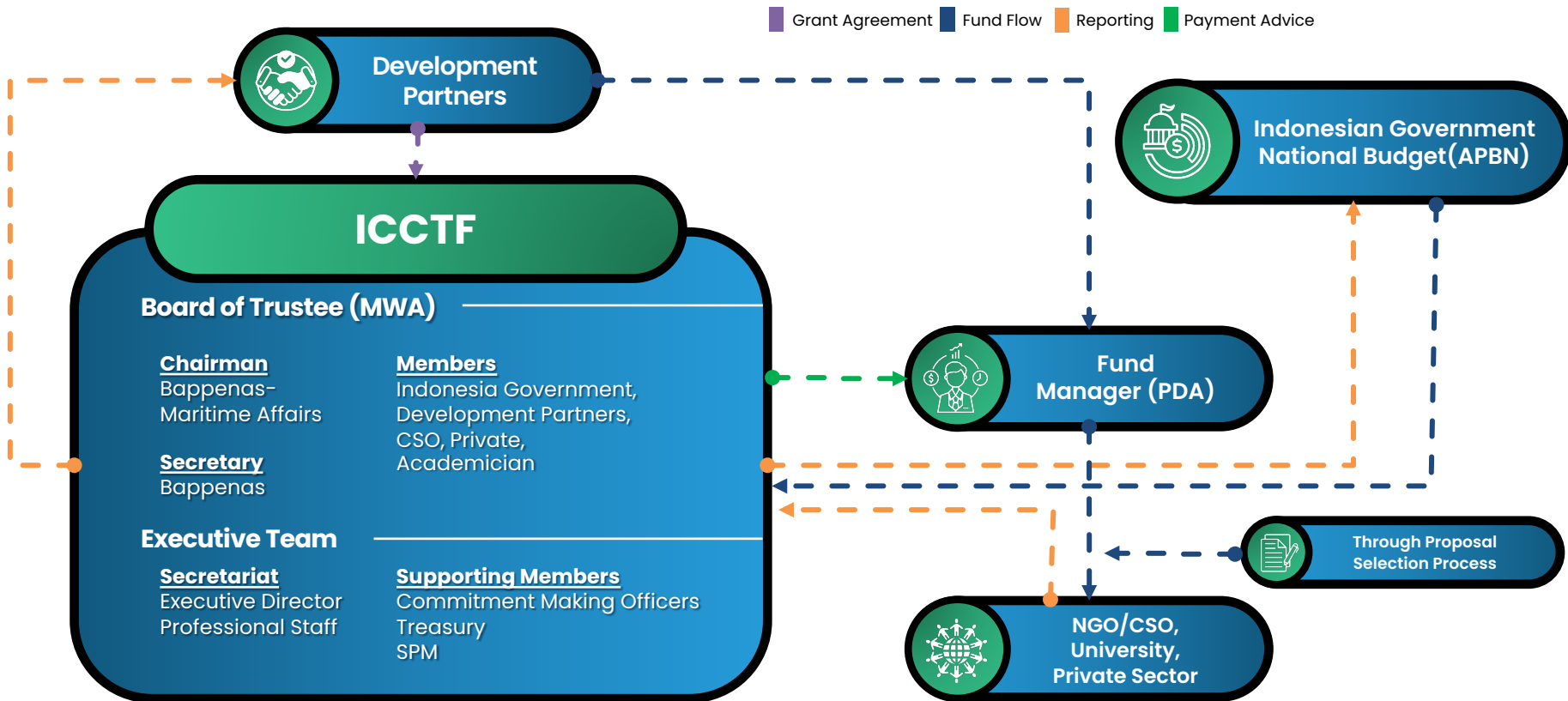
- Bilateral
- Multilateral
- Private Sector



Grant Channelling

Through “Call for proposal” mechanism submitted by CSOs, NGOs, academic institutions, research institutes, and community groups.

ICCTF Business Process





Chairman

Deputy Minister for Maritime Affairs
and Natural Resources, Bappenas



Secretary

Director of Environment, Bappenas
Kementerian PPN/Bappenas



Anggota

1. Deputy Minister for Development Funding, Bappenas
2. Head of Fiscal Policy Agency, Ministry of Finance
3. Deputy Minister for Macroeconomic and Funding Coordination, Coordinating Ministry of Economics
4. Deputy Minister for Health Improvement Coordination, Coordinating Ministry for Human Development and Cultural Affair
5. Representative of Civil Society Organization, Executive Director of Institute for Essential Service Reform (IESR):
Fabby Tumiwa
6. Representative of Private Sector, Vice Chairwoman for The Indonesian Chamber of Commerce & Industry (KADIN)
7. Representative of Academician, Chairman of Research Center for Climate Change University of Indonesia (RCCC UI): **Ir. Jatna Supriatna, M.Sc., Ph.D**
8. Representative of Development Partners (**3 Biggest Donor**)
9. Director of Energy Resources, Mineral and Mining, Bappenas
10. Director of Marine Affairs and Fisheries, Bappenas

Working Group (WG)

1. **Chair of WG I Environment** : Director of Environment, Bappenas
2. **Chair of WG II Energy**: Director of Energy Resources, Mineral and Mining, Bappenas
3. **Chair of WG III Marine and Fisheries**: Director of Marine Affairs and Fisheries, Bappenas

Grant US\$ 8 Million

USAID, DFID/UKCCU,
AusAID, UNDP



2009 –
2014

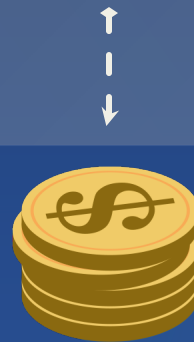
(PREP ICCTF)

Grant US\$ 10,8 Million

USAID, DFID/UKCCU, DANIDA

Technical Assistant
EUR 3,5 Million

GIZ



2015 –
2019

ICCTF (Mitigation,
Adaptation & Energy
Windows)

Grant US\$ 11,4 Million: COREMAP-CTI
GEF through WB and ADB > 2019–2023

Grant EUR 620.000: BLUE CARBON –
AFD > 2022–2026

Grant US\$ 5 million LAUTRA-
ProBlue – WB > 2023–2025

Grant US\$ 1,2 million Shrimp Aquaculture
– GEF-ADB > 2024–2028



2019 –
2028

(ICCTF –
Adaptation &
Marine Windows)

ICCTF Project Location

FOCUS AREA

- Land based Mitigation
- Energy
- Adaptation & Resilience
- Marine Based

23

Sumatra projects

- Jambi (3 projects)
- Bangka Belitung (1 project)
- Riau (1 project)
- Aceh (2 projects)
- North Sumatra (2 projects)
- Riau (9 projects)
- South Sumatra (3 projects)
- West Sumatra (2 projects)

Kalimantan projects

- Central Kalimantan (11 projects)
 - East Kalimantan (1 project)
 - South Kalimantan (3 projects)
 - West Kalimantan (4 projects)

19

6

Sulawesi projects

- Gorontalo (1 project)
- North Sulawesi (2 project)
- South Sulawesi (1 project)
- Southeast Sulawesi (2 projects)

36

Java projects

- Banten (1 project)
- Central Java (8 projects)
- East Java (6 projects)
- Jakarta (3 projects)
- West Java (11 projects)
- Yogyakarta (7 projects)

21

Bali-Nusa Tenggara projects

- Bali (3 project)
- NTB (5 projects)
- NTT (9 projects)

9

Maluku-Papua projects

- Maluku (2 projects)
- Papua (2 projects)
- West Papua (5 new projects)

Total 114 Project
29 Province,
9.4 Mton CO₂-e reduction

Notes: Some projects are located in different provinces

Process of Proposal Selection



Proposal Submission

ICCTF Secretariat announces Call for Proposal on websites and media, and then receives proposals via email.



Administrative Assessment

ICCTF Secretariat checks all proposals received including the supporting documents.



In-depth Proposal Assessment

Administratively feasible proposals are assessed by Independent Experts to produce short-listed proposals.



Induction Workshop & Signing of Contract

ICCTF secretariat assists the selected proponent(s) to develop log frame table and annual work plan. The Committing Officer (PPK) and the chairman of proponent's institution will sign the contract.



Approval from ICCTF's Board of Trustee (MWA)

ICCTF Secretariat circulates short-listed proposals to be selected by MWA members. The chairman of MWA will issue a letter of funding approval.



Consultation meetings with Bappenas and/or other ministries/agencies

Short-listed proposals are consulted with the relevant work units in Bappenas and/or other ministries/agencies before being submitted to ICCTF's Board of Trustee.



Achievements of Land Based Mitigation Program



Focus of Activities

- Forest and critical land management
- Peatland management
- Forest fire prevention
- Watershed management
- Land productivity improvement
- Land and marine conservation management
- Non-burn land management
- Community livelihood in peatland area

Improving local economy

- Improving community livelihood up to 600%
- Efficiency of budget for agricultural and households up to 70%

Improving plant productivity

- Improving paddy productivity through non-burn agriculture



Achievements of Adaptation & Resilience Program



Focus of Activities

- Science and technology application
- Improving sustainable economy for communities
- Food sovereignty and ecosystem conservation
- Strengthen supporting system to mainstream adaptation into policy

Economic Improvement

- Saving of cost for vegetables consumption up to Rp 100-250 thousand of each family per month

Improving of Land Productivity

- Improving of paddy production using System of Rice Intensification (SRI) up to 200%

Sustainability

- Replication of System of Rice Intensification (SRI) to all districts in NTT
- Leverage of local contribution for rehabilitation of ex-mining land in Belitung with total investment from Rp 2 billion to Rp. 20,5 billion



Achievements of Energy Program



Focus of Activities

- Biomass energy utilization
- Wind energy utilization
- Solar energy utilization

Reducing of GHG Emission

106 tonnes CO₂/year (RCCC UI, Yayasan Enerbi, LPM Universitas Mataram)

Economic Improvement

- Saving of cost for communities around Rp 150,000/month/family (Enerbi – Gunungkidul)
- Potential income from water management Rp 15 million/year (Enerbi – Gunungkidul)
- Potential income from farming (papaya and chili) up to Rp 715 million per 2 year (LPM Univ. Mataram – Lombok Utara)

Achievement Marine Based Program



FOCUS OF ACTIVITIES

1. Sustainable utilization of MPA
2. Implementation of National Plan of Action for ETP Species
3. Support to Integrated coastal management and ecosystem-based management plan
4. Support for Community Monitoring Groups (*Kelompok Masyarakat Pengawas/POKMASWAS*)
5. Support for Marine-based livelihood development
6. Assessment on Biophysics of MPA, Supply Chain and Market Analysis of Tuna, Snapper, and Seaweed
7. Master's degree program

SCIENCE-BASED POLICY DAN COMMUNITY-BASED IMPLEMENTATION MODEL

Capacity building and community involvement in monitoring coastal ecosystems

Development of species-based tourism supported by scientific-based data and information.

Village and community involvement in managing tourism supporting infrastructure

Data on population and movement of species used as input in plans for management and use of the area

COREMAP - CTI WB (2019 - 2022)



Implementing Unit

ICCTF- Bappenas



Project Objective

"To improve management effectiveness of priority coastal ecosystem."



Project duration

19 June 2019 –
30 June 2022



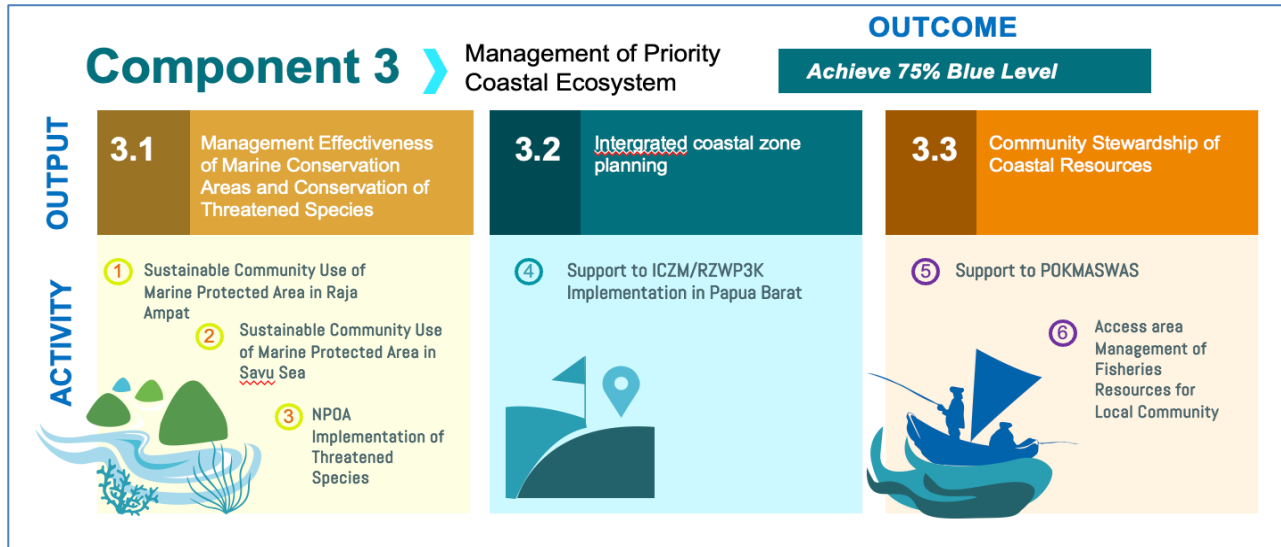
Project sites

- TWP Laut Sawu
- SAP Kep. Waigeo Sebelah Barat
- SAP Kep. Raja Ampat
- KKPD Raja Ampat



Funding

Grant GEF
US\$ 6.2 juta
(IDR 87 Milyar)



COREMAP - CTI ADB (2020 - 2023)

COREMAP

- Coral Reef Rehabilitation and Management Program is the largest management measures taken by the Government of Indonesia to conserve and rehabilitate coastal resources while improving the welfare of the communities.
- Project Period: 1998 – 2023
- Total Budget: **USD 164,150,000** (Source: WB, ADB, GEF, AUSAID)

COREMAP-CTI ADB

Implemented By
ICCTF - Bappenas



Location: Lesser Sunda Seascape



BUDGET
USD 5.2 Million

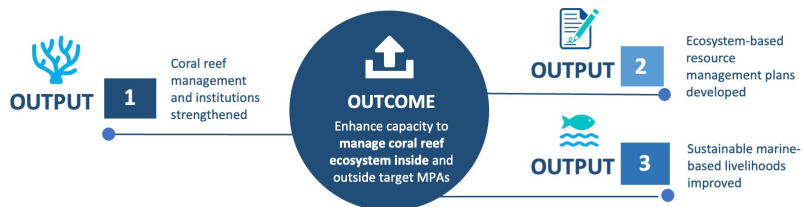
PERIODE
2020 - 2023

Donor
GEF - ADB

Impact



Sustainable management
of coral reef ecosystems
in the project area



PROJECT BENEFITS



improved management effectiveness of **30,000 ha of marine areas** for conservation and sustainable use;



strengthened ecosystems services across **7,431 ha of coral reef area and 857,6 ha of mangroves**;



Improved conservation status of marine species, namely **mola-mola, sharks and turtles** through the provision of Code of Conduct, SOP, and action plans;



Implementation of sustainable fishing practices for two important marine fisheries in the project areas, namely **snapper and tuna**; and



Improved the development of sustainable seaweed farming practices

Ocean Prosperity – Lautra Project (2023 – 2025)



To enhance the sustainable management of selected marine protected area and coral reef fisheries, and access to economic opportunities for local communities in target areas.



Component 1. Infrastructure and institutional strengthening for sustainable Marine Protected Areas Management



Component 2. Expanding Economic Opportunities in and around Marine Protected Areas



Component 3. Sustainable Financing for Marine Protected Areas and Livelihoods

BAPPENAS - ICCTF

OUTPUT

3.1 Strengthening the Enabling Environment and Policy Framework for Blue Finance

3.2 Develop and implement long term investment strategies for the priority blue economy sectors

1. Blue Finance Instrument Support (Monitoring and Reporting, and Verification (MRV) framework for blue investments)
2. Regulation and recommendation to support blue finance implementation
3. blue finance strategies and proposals; submitted to MoF
 - a. MPA
 - b. Public Infrastructure
 - c. MSME



11 Provinces
15 MPAs
5 proposed new MPAs



- Project Management Office: Kementerian Kelautan dan Perikanan (KKP)
- Project Implementing Unit Component 1 dan Component 2: DJPKRL, DJPT, dan DJPB (KKP)
- Project Implementing Unit Component 3: ICCTF - Bappenas

Effective Date: 17 May 2023

Closing Date : 30 September 2025

Grant : USD 5 Million

Donor. : ProBlue World Bank

PROJECT: Support for the Integration of Blue Carbon Ecosystems in Indonesia's Biodiversity and Climate Policies (2022 – 2026)



Outcomes



Funding
AFD 2050 facility



Budget
620.000 EUR



Duration
3 Years,
October 2022 - Januari
2026

Locations

1 Integration of blue carbon into national and sub-national policies through the implementation of the Indonesian Blue Carbon Policy Framework (IBCSF)

- Blue Carbon Roadmap
- Assessment of existing regulations and initiatives regarding access to blue carbon credit
- Recommendation for NDC Update

2 Improve the capacity of national and sub-national stakeholders in terms of baseline, inventory, and MRV

- Blue Carbon Baseline
- MRV Guideline



Aquaculture Project (2024 – 2028)

Project Name : *Towards Sustainable and Conversion-Free Aquaculture in Southeast Asia*

Donor : **GEF ADB**

Location : **Lampung, Aceh, Jawa Timur, Jawa Barat, Sulawesi Selatan**

Funding : **USD 4,449,542 (Indonesia & Timor Leste)**
Bappenas: USD 1,164,890

Duration : **2023 – 2028**

Regional Project (Indonesia and Timor Leste). Indonesia focuses on shrimp commodities to expand the shrimp supply chain / infrastructure, and Timor-Leste focuses on seaweed.

This project is a companion project to the Loan Infrastructure Improvement for Shrimp Aquaculture Project (IISAP) implemented by Ministry of Marine and Fisheries.

Total Loan

Indonesia: US\$ 93,000,000; Timor Leste: US\$ 31,500,000



Grant Overview

Implement Agencies	Components 1-5	M&E	Component 7 (PMC)	Grant Total (USD)
BAPPENAS	1,101,890	-	63,000	1,164,890
MMAF	1,664,310	-	63,000	1,727,310
ADB	1,557,342			1,557,342
Totals	2,766,200	-	126,000	4,449,542

Output 1: National aquaculture strategies and implementation/action plans developed

Output 2: A credible and functioning shrimp feed management system created to connect shrimp feeds to shrimp products

Output 3: Sustainable techniques for seaweed aquaculture adopted by seaweed farmers for increased production and capture of nutrients from the ocean







Output 4: Market linkages for shrimp feeds and seaweed improved

Output 5: Knowledge management and learning systems supported for sustainable and conversion-free aquaculture

Monitoring & Evaluation

Project Management

ICCTF's Relevant Activities

Relevant Activities					
 Sector	 Mitigation	 Adaptation	 Livelihood	 Biodiversity	 SDG Goals
Environment	<ul style="list-style-type: none"> Domestic and Industrial Waste Management Domestic and Industrial Liquid Waste Management Plastic Waste Management Forest and peatland fire control Sustainable City 	<ul style="list-style-type: none"> Vulnerability and threat assessment 			13
Food and Agriculture	<ul style="list-style-type: none"> Agricultural land development on peatland Utilization of livestock waste for biogas Agricultural land management without burn 	<ul style="list-style-type: none"> Development of climate resilient seedlings 	<ul style="list-style-type: none"> Food security 		2
Forestry and Water Resources	<ul style="list-style-type: none"> Deforestation management Forest and peatland area management Watershed and forest ecosystem management Forest and peatland fire control Reforestation 	<ul style="list-style-type: none"> Development of species and genetic conservation Management of water resources infrastructure 	<ul style="list-style-type: none"> Utilization of environmental services and nature tourism Utilization and improvement for forest area business 	<ul style="list-style-type: none"> Development and management for conservation areas and biodiversity (Terrestrial) 	15
Energy, Mineral and Mining Resources	<ul style="list-style-type: none"> Energy conservation and energy audit Biogas utilization Development of hydro power (Micro/Medium) 	<ul style="list-style-type: none"> Bioenergy development 			7
Marine and Fisheries	<ul style="list-style-type: none"> Development of ocean energy Rehabilitation and conservation of mangrove and seagrass (Blue Carbon) Development of low-emission aquaculture fisheries 	<ul style="list-style-type: none"> Development of species and genetic conservation Vulnerability and threat assessment Coastal ecosystem rehabilitation Access to information related to weather and information for fishermen Marine Debris and Ghost Net Blue food 	<ul style="list-style-type: none"> Utilization of environmental services and nature tourism Development of aquaculture fisheries Development of Alternative Marine Based Livelihood 	<ul style="list-style-type: none"> Development and management conservation areas and biodiversity (Coastal and Marine) 	14 19



Terima Kasih



www.icctf.or.id